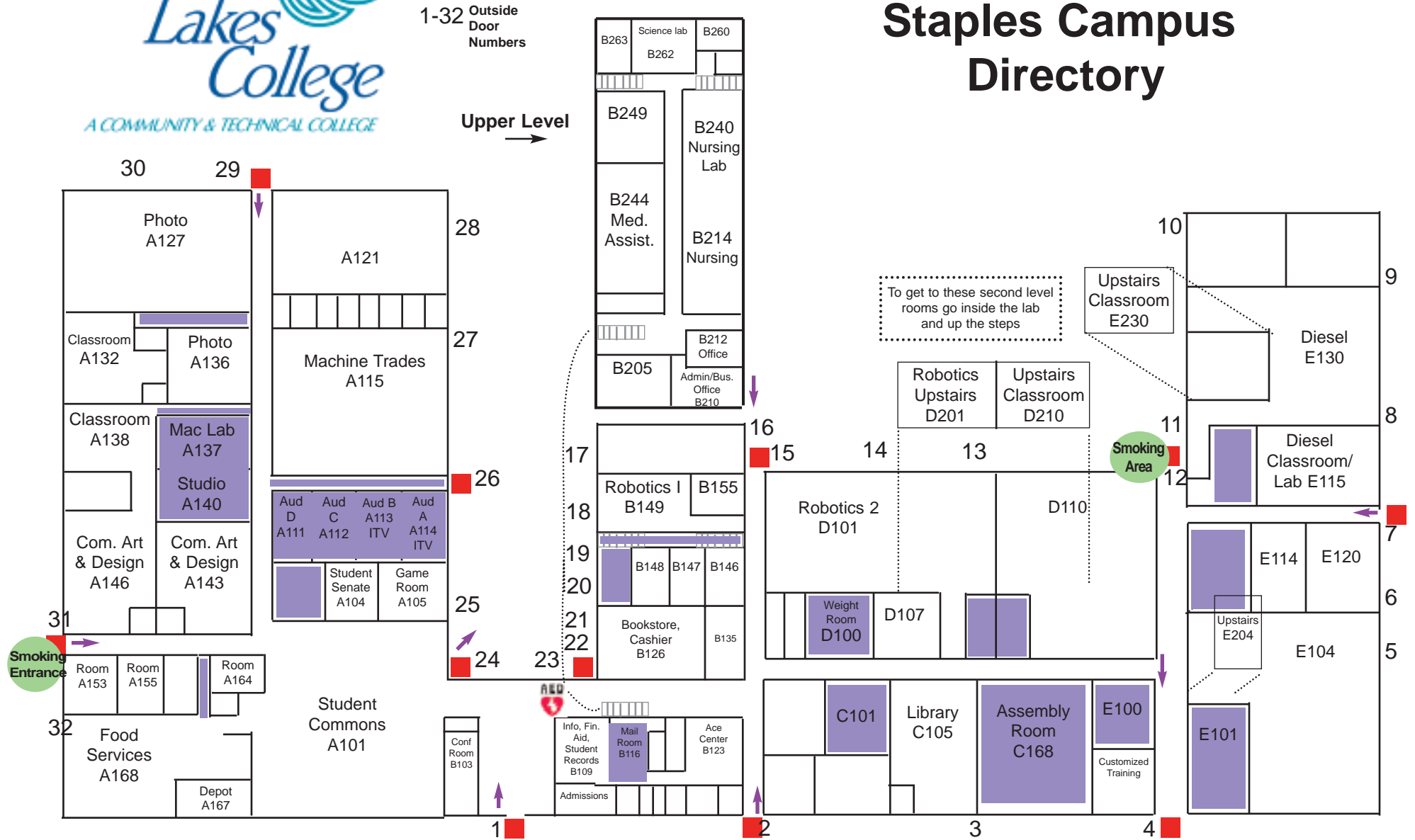




Staples Campus Directory



Fire/Evacuation Exit

CLC is committed to a policy of nondiscrimination in employment and education opportunity. No person shall be discriminated against in the terms and conditions of employment, personnel practices, or access to and participation in, programs, services, and activities with regard to race, sex, color, creed, religion, age, national origin, disability, marital status, status with regard to public assistance, sexual orientation, or membership or activity in a local commission as defined by law. This information is available in alternative format upon a 48-hour advance request by contacting Paula Huss in Disability Services, office C111 at 800-933-0346 ext 8175. Deaf and Hard of Hearing users or TTY communication contact the "Minnesota Relay Service at 7-1-1 or 1-800-627-3529."

Tornado/Lockdown Room